

IM2 TUFSTIK®
AN INDUSTRIAL
POINTING
DEVICE

IM2 TUFSTIK®



The Workmate TufStik® utilises a patented op to-strain gauge sensing technology The joystick provides an ergonomic pointer device. It has a click in the stick to further enhance this.

The mouse cursor speed is proportional to displacement of the joystick thus providing both speed and precision. Its movement is optimised with an 'orthogonal weighting' making horizontal and vertical movements easier to describe. Unlike mice and trackballs, it is unaffected by dust and water and is sealed to IP65.

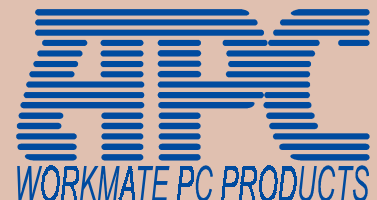
The unit has a metal base with a rubber overlay. Its weight and rubber feet ensure it does not slip.

The unit connects via a standard PC serial or PS/2 port and is available for desktop or panel mounting.

It requires little desk space, and offers excellent control, even for office environments.

FEATURES

- 'CLICK IN STICK'
- 2 YEAR WARRANTY
- SEALED TO IP65
- PRECISE FAST CONTROL
- DESIGNED FOR INDUSTRIAL ENVIRONMENTS
- COMPATIBLE WITH MICROSOFT® MOUSE
- UNAFFECTED BY DUST OR WATER
- SERIAL OR PS/2 - AUTOSELECT
- TESTED FOR EMC TO **CE** STANDARDS



GENERAL SPECIFICATIONS

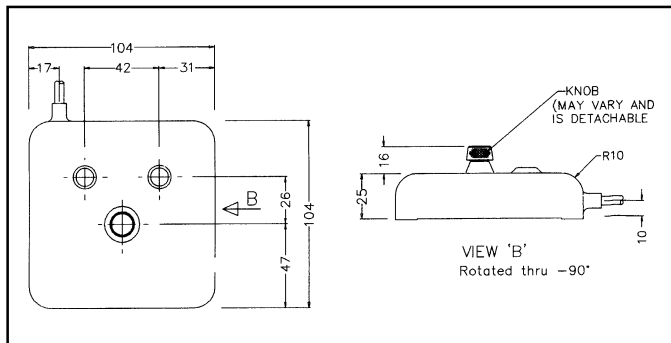
ENVIRONMENTAL:	Sealing to IP65. Die cast aluminium construction, with nitrile rubber overlay	OPERATION:	Cursor movement speed proportional to joystick displacement (exponential relationship), with 'orthogonal weighting'. Auto zero on power up.
TEMPERATURE:	Operating 0°C to 60°C Non-operating -20°C to 70°C	JOYSTICK:	Opto Strain Gauge. Compatible with Microsoft® Mouse. (Driver not provided)
EMC:	Immunity: CE: EN5008-2: 1995 Generic Immunity Standard Part 2: Industrial Environment EMISSIONS: CE: EN55022: 1995. CISPR22 1993 Class B FCC: Class A	CONNECTION:	2 metre coiled lead with nine pin Female D type connector for serial mouse. Adaptor provided for PS/2 connection.
SHOCK:	25g (11 mS sine wave) 3 axis	NOTE:	Subject to Patent application
WEIGHT:	Approx 3kg		

CONFIGURATION

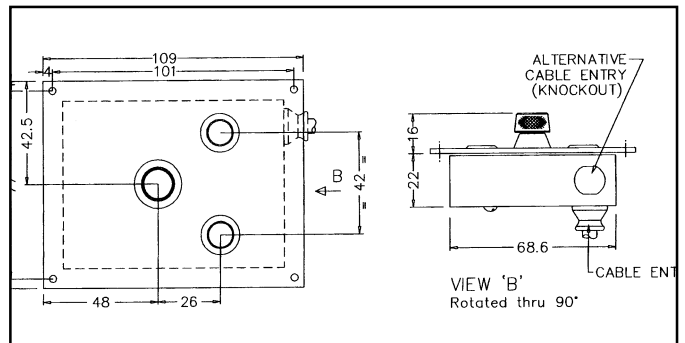
Due to the ever improving specifications and flexibility of configurations offered in Workmate PC Products, please use the checklist below when configuring your system. Please ensure you confirm all available configurations with your local Workmate Representative.

ORDERING INFORMATION	
IM2	Desktop
IM2-P	Panel mount (faceplate only sealed)
IM2-OEM	Low cost version without faceplate, enclosure or cable, for integration into customer's own panels

DIMENSIONS - Desk Mount



DIMENSIONS - Panel Mount



Manufactured in Australia by:
 Automation & Process Control Services Pty Ltd CN: 008044451
 Head Office: Adelaide, South Australia, 40 Stepney St, Stepney SA 5069
 PH: +618 8363 0400 FAX: +618 8363 1736
 Branch Offices: Melbourne - Sydney - Brisbane.
Toll Free Number: 1 800 882 972

Due to continuing developments, specifications are subject to change without notice.
No liability is accepted for errors or omissions.